

S

PERPUSTAKAAN NASIONAL RI
NB 2654

Tanggal : 08 Sept 2020
Item ID : 00002787527
No. Induk : 20200120302893
BIB-ID 4.9
Beli/Hadiah GEDE N/DNR

000-0920001753
NB 2654

08 SEP 2020

PERPUSTAKAAN NASIONAL RI

Handwritten text in a script, likely Balinese, on a palm leaf. The text is arranged in several lines and is partially obscured by a watermark.



Handwritten text on a palm-leaf manuscript strip, likely in Burmese script. The text is arranged in several lines across the length of the leaf. There are three circular holes visible along the strip, which were traditionally used for threading a cord to bind multiple leaves together into a book format. The script is finely etched into the surface of the dried leaf.

Handwritten text on a second palm-leaf manuscript strip, also in Burmese script. This strip features three circular holes, consistent with the strip above, indicating it was part of the same bound volume. The text is written in a similar cursive style, typical of traditional Burmese manuscript writing.



Handwritten text in Burmese script on a wooden slip. The text is arranged in three lines and is written in a cursive style. The characters are dark and clearly legible against the lighter wood. The slip has three holes, similar to the one above it.

Handwritten text on a palm-leaf manuscript strip, likely in an ancient Southeast Asian script. The text is arranged in approximately three lines and includes several small circular holes, characteristic of traditional leaf manuscripts. The script is finely etched into the surface of the dried leaf.

Handwritten text on a second palm-leaf manuscript strip, similar to the one above. It also features multiple lines of text and small circular holes. The script is consistent with the one on the first strip, suggesting they are part of the same document or collection.

Handwritten text on a palm leaf strip, oriented vertically. The text is written in a cursive script, likely Tamil, and is arranged in approximately three lines. Three small circular holes are visible along the length of the strip, which were used for binding multiple leaves together to form a book.

Handwritten text on a second palm leaf strip, oriented vertically. The text is written in a cursive script, likely Tamil, and is arranged in approximately three lines. Three small circular holes are visible along the length of the strip, which were used for binding multiple leaves together to form a book.

Handwritten text in an ancient script, likely Tamil, on a palm leaf. The text is arranged in approximately three horizontal lines. There are three circular holes along the length of the leaf, which were used for threading a cord to bind multiple leaves together into a book format. The leaf shows signs of age and wear.

Handwritten text in an ancient script, likely Tamil, on a palm leaf. The text is arranged in approximately three horizontal lines. There are three circular holes along the length of the leaf, which were used for threading a cord to bind multiple leaves together into a book format. The leaf shows signs of age and wear.

Handwritten text on a palm-leaf strip, likely in Burmese script. The text is arranged in three lines and includes several circular holes for binding. The script is finely etched into the surface of the leaf.

Handwritten text on a second palm-leaf strip, also in Burmese script. It features three circular holes and is positioned below the first strip. The text is similarly etched and appears to be a continuation or a separate entry related to the first strip.

Handwritten text on a palm-leaf manuscript strip, oriented vertically. The text is written in a cursive script and is partially obscured by a green stain. Three circular holes are visible along the length of the strip.

Handwritten text on a palm-leaf manuscript strip, oriented vertically. The text is written in a cursive script. Three circular holes are visible along the length of the strip.

Handwritten text on a palm leaf strip, likely in Burmese script. The text is arranged in several lines and is partially obscured by three circular holes. The script is finely etched into the surface of the leaf.

Handwritten text on a second palm leaf strip, also in Burmese script. This strip features three circular holes and contains several lines of text, including what appears to be a date or specific reference: "၁၈၈၇-၁၈၈၈ ခုနှစ်" (1887-1888 year).

Handwritten text on a palm-leaf manuscript strip, oriented vertically. The text is written in a cursive script, likely Burmese, and is arranged in approximately three lines. Three circular holes are visible along the length of the strip, used for binding multiple leaves together.

Handwritten text on a second palm-leaf manuscript strip, oriented vertically. The text is written in a cursive script, likely Burmese, and is arranged in approximately three lines. Three circular holes are visible along the length of the strip, used for binding multiple leaves together.

Handwritten text on a palm leaf strip, likely in an ancient script. The text is arranged in three lines and includes several circular holes, possibly for binding or identification. The script is finely etched into the surface of the leaf.

Handwritten text on a second palm leaf strip, similar to the first. It also features three circular holes and is written in the same ancient script. The leaf shows signs of age and wear.

Handwritten text on a palm leaf strip, likely in an ancient script. The text is arranged in three lines and includes three circular holes for binding. The script is finely etched into the surface of the leaf.

Handwritten text on a second palm leaf strip, continuing the script from the first strip. It also features three circular holes for binding and is set against a background of blue and green paper fragments.

Handwritten text on a palm-leaf strip, oriented vertically. The text is written in a cursive script and is mostly illegible due to fading and the angle of the leaf. Three small circular holes are visible along the length of the strip.

Handwritten text on a palm-leaf strip, oriented horizontally. The text is written in a cursive script and is mostly illegible due to fading and the angle of the leaf. Three small circular holes are visible along the length of the strip.

Handwritten text in an ancient script, likely Linear B, on a wooden tablet. The text is arranged in several lines and includes three circular holes for binding. The script is finely etched into the wood.

Handwritten text in an ancient script, likely Linear B, on a wooden tablet. The text is arranged in several lines and includes three circular holes for binding. The script is finely etched into the wood.

Handwritten text on a palm leaf, likely in an Indic script. The text is faint and mostly illegible due to fading and the texture of the leaf. Three circular holes are visible along the length of the leaf, which were traditionally used for threading a cord to bind multiple leaves together into a book format.

Handwritten text on a palm leaf, likely in an Indic script. The text is more legible than the top leaf and appears to be organized into several lines. Three circular holes are visible along the length of the leaf, consistent with traditional bookbinding. The script is densely packed and covers most of the leaf's surface.

Handwritten text on a palm-leaf strip, likely in an ancient script. The text is arranged in several lines and includes several circular holes for binding. The script appears to be a form of South Asian or Southeast Asian writing, possibly from the Khmer or Mon regions.

Handwritten text on a second palm-leaf strip, similar to the one above. It also features circular holes and is written in the same script. The text is less legible due to fading and the angle of the leaf.

Handwritten Burmese script on a palm leaf, featuring three circular holes for binding.

Handwritten Burmese script on a palm leaf, featuring three circular holes for binding.

Handwritten text on a palm leaf strip, likely in an ancient script. The text is arranged in three lines and includes several circular symbols (possibly decorative or functional markers). The script is finely etched into the surface of the leaf.

Handwritten text on a second palm leaf strip, continuing the script from the first strip. It also features circular symbols and is written in a similar style to the top strip.

Handwritten Burmese script on a palm-leaf fragment. The text is arranged in approximately three lines, though it is significantly faded and partially obscured by a dark stain. Three circular holes are visible along the length of the leaf.

Handwritten Burmese script on a palm-leaf fragment. The text is arranged in three lines and is more legible than the fragment above. Three circular holes are visible along the length of the leaf.

Handwritten text in Burmese script on a palm-leaf manuscript strip. The text is arranged in approximately three lines. There are three circular holes punched along the length of the strip, which were used for threading a cord to bind multiple leaves together. The script is finely etched into the surface of the dried leaf.

Handwritten text in Burmese script on a second palm-leaf manuscript strip. Similar to the first strip, it features three circular holes for binding. The text is also arranged in lines and is clearly legible despite the aged appearance of the leaf.

Blank palm-leaf manuscript strip with three holes.

Handwritten Burmese script on a palm-leaf manuscript strip. The text is arranged in approximately three lines and includes characters such as 'သတိပဋ္ဌာန်', 'အာရုံစိုက်ခြင်း', and 'စိတ်နှောင့်နှေးခြင်း'.

Handwritten text on a palm-leaf manuscript strip, oriented vertically. The text is written in a cursive script, likely Burmese, and is arranged in approximately three lines. There are three circular holes along the length of the strip, which were used for threading a cord to bind multiple leaves together.

Handwritten text on a second palm-leaf manuscript strip, oriented vertically. The text is written in a cursive script, likely Burmese, and is arranged in approximately three lines. There are three circular holes along the length of the strip, which were used for threading a cord to bind multiple leaves together.



Handwritten text in a cursive script, likely Burmese, on a light-colored wooden strip. The text is arranged in three lines and is partially obscured by three small circular holes. The script is dense and difficult to decipher without specialized knowledge of the language.

Handwritten text on a palm-leaf strip, likely in an ancient script. The text is arranged in three lines and includes several circular holes for binding. The script is finely etched into the surface of the leaf.

Handwritten text on a second palm-leaf strip, continuing the script from the first strip. It also features three circular holes and is set against a background of a colorful geometric pattern.

Handwritten text on a palm-leaf manuscript strip, likely in an Indic script. The text is arranged in approximately three horizontal lines. The script is finely etched into the surface of the dried leaf. There are three distinct circular holes along the length of the strip, which were traditionally used for threading a cord to bind multiple leaves together into a book format.

A second palm-leaf manuscript strip, positioned below the first. This strip is mostly blank, with only a few very faint, illegible markings visible. It also features three circular holes, consistent with the strip above, indicating it was part of the same bound volume.



Handwritten text on a palm-leaf manuscript strip, featuring three circular holes for binding. The script is an ancient form of a South Asian language, likely Tamil or Grantha, written in dark ink on the natural yellowish-brown surface of the leaf. The text is arranged in approximately three horizontal lines across the length of the strip.

A second palm-leaf manuscript strip, positioned below the first. It also features three circular holes for binding. The surface appears mostly blank or has extremely faint, illegible markings, possibly due to fading or the specific type of ink used.



Handwritten text on a palm leaf strip, likely a form of script such as Tamil or Grantha. The text is arranged in several lines across the length of the leaf. There are three distinct circular holes punched along the top edge of the leaf, which were traditionally used for threading a cord to bind multiple leaves together into a book format.

Handwritten text on a second palm leaf strip, similar to the one above. This strip also features three circular holes along its top edge. A small red thread is visible on the right side of the leaf, possibly used for binding or as a marker. The script is consistent with the one on the upper leaf.



Handwritten text in a script, likely Burmese, written on a long, thin, light-colored wooden strip. The text is arranged in three lines and is written in a cursive style. There are three small circular holes along the length of the strip, one on each line of text. The strip is oriented horizontally.

Handwritten text in an ancient script, possibly Tamil, on a palm leaf. The text is arranged in three lines and includes three circular holes for binding. The script is finely etched into the surface of the leaf.





Handwritten text on a palm-leaf manuscript strip, oriented vertically. The text is written in a dark ink and appears to be in a South Asian script, possibly Tamil or Grantha. The strip has three circular holes along its length, which were traditionally used for threading a cord to bind multiple leaves together into a book format. The text is arranged in approximately three lines across the length of the leaf.

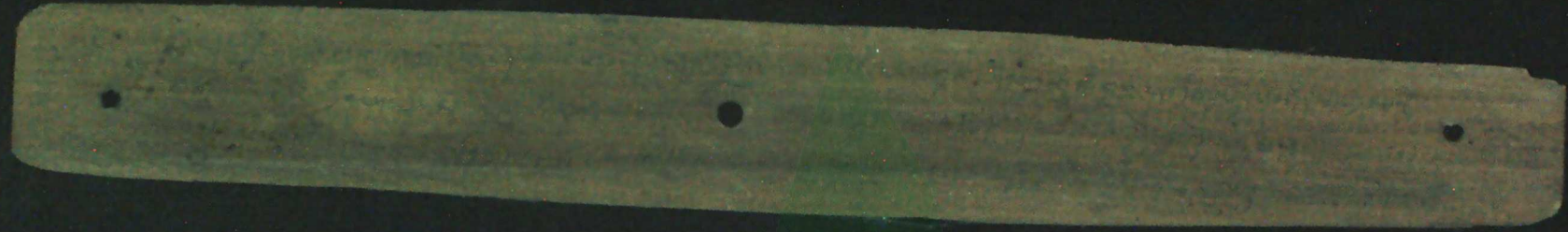
Handwritten text on a second palm-leaf manuscript strip, oriented vertically. This strip also features three circular holes for binding. The text is written in a similar script to the first strip and is arranged in approximately three lines. The leaf shows signs of age and wear, with some discoloration and faint markings.

Handwritten text in an ancient script, possibly Tamil, on a palm leaf. The text is arranged in approximately three horizontal lines. There are several circular holes along the length of the leaf, which were traditionally used for threading a cord to bind multiple leaves together into a book format. The leaf shows signs of age and wear.

Handwritten text in an ancient script, possibly Tamil, on a palm leaf. The text is arranged in approximately three horizontal lines. There are several circular holes along the length of the leaf, which were traditionally used for threading a cord to bind multiple leaves together into a book format. The leaf shows signs of age and wear.

Handwritten text on a palm-leaf manuscript strip, oriented vertically. The text is written in a cursive script, likely Tamil, and is arranged in approximately three lines. Three circular holes are visible along the length of the strip, which were used for threading a cord to bind multiple leaves together. The leaf shows signs of age and wear.

Handwritten text on a second palm-leaf manuscript strip, oriented vertically. The text is written in a cursive script, likely Tamil, and is arranged in approximately three lines. Three circular holes are visible along the length of the strip, which were used for threading a cord to bind multiple leaves together. The leaf shows signs of age and wear.



Fragment of a palm-leaf manuscript strip with three circular holes. The text is faint and illegible.

Fragment of a palm-leaf manuscript strip with three circular holes. The text is faint and illegible.

Handwritten text on a palm leaf strip, oriented vertically. The text is written in a cursive script and is partially obscured by three circular holes. The leaf shows signs of age and discoloration.

Handwritten text on a second palm leaf strip, oriented vertically. Similar to the first strip, it features three circular holes and shows signs of wear and discoloration.

Handwritten text on a palm leaf strip, likely a calendar or record. The text is arranged in approximately three lines and includes numerical entries such as ၁၀, ၁၁, ၁၂, ၁၃, ၁၄, ၁၅, ၁၆, ၁၇, ၁၈, ၁၉, ၂၀, ၂၁, ၂၂, ၂၃, ၂၄, ၂၅, ၂၆, ၂၇, ၂၈, ၂၉, ၃၀, ၃၁, ၃၂, ၃၃, ၃၄, ၃၅, ၃၆, ၃၇, ၃၈, ၃၉, ၄၀, ၄၁, ၄၂, ၄၃, ၄၄, ၄၅, ၄၆, ၄၇, ၄၈, ၄၉, ၅၀, ၅၁, ၅၂, ၅၃, ၅၄, ၅၅, ၅၆, ၅၇, ၅၈, ၅၉, ၆၀, ၆၁, ၆၂, ၆၃, ၆၄, ၆၅, ၆၆, ၆၇, ၆၈, ၆၉, ၇၀, ၇၁, ၇၂, ၇၃, ၇၄, ၇၅, ၇၆, ၇၇, ၇၈, ၇၉, ၈၀, ၈၁, ၈၂, ၈၃, ၈၄, ၈၅, ၈၆, ၈၇, ၈၈, ၈၉, ၉၀, ၉၁, ၉၂, ၉၃, ၉၄, ၉၅, ၉၆, ၉၇, ၉၈, ၉၉, ၁၀၀. The text is written in a cursive script, possibly Burmese or Thai.

Handwritten text on a palm leaf strip, likely a calendar or record. The text is arranged in approximately three lines and includes numerical entries such as ၁၀, ၁၁, ၁၂, ၁၃, ၁၄, ၁၅, ၁၆, ၁၇, ၁၈, ၁၉, ၂၀, ၂၁, ၂၂, ၂၃, ၂၄, ၂၅, ၂၆, ၂၇, ၂၈, ၂၉, ၃၀, ၃၁, ၃၂, ၃၃, ၃၄, ၃၅, ၃၆, ၃၇, ၃၈, ၃၉, ၄၀, ၄၁, ၄၂, ၄၃, ၄၄, ၄၅, ၄၆, ၄၇, ၄၈, ၄၉, ၅၀, ၅၁, ၅၂, ၅၃, ၅၄, ၅၅, ၅၆, ၅၇, ၅၈, ၅၉, ၆၀, ၆၁, ၆၂, ၆၃, ၆၄, ၆၅, ၆၆, ၆၇, ၆၈, ၆၉, ၇၀, ၇၁, ၇၂, ၇၃, ၇၄, ၇၅, ၇၆, ၇၇, ၇၈, ၇၉, ၈၀, ၈၁, ၈၂, ၈၃, ၈၄, ၈၅, ၈၆, ၈၇, ၈၈, ၈၉, ၉၀, ၉၁, ၉၂, ၉၃, ၉၄, ၉၅, ၉၆, ၉၇, ၉၈, ၉၉, ၁၀၀. The text is written in a cursive script, possibly Burmese or Thai.

Handwritten text on a palm leaf strip, likely a calendar or record. The text is written in a cursive script and includes several lines of characters, possibly representing dates or events. There are two circular holes on the strip, one near the left end and one near the right end.

Handwritten text on a second palm leaf strip, continuing the record. The script is consistent with the first strip. It also features two circular holes, one on the left and one on the right. A small blue mark is visible on the dark background below the strip.

Handwritten text on a palm-leaf strip, oriented vertically. The text is written in a cursive script, likely Tamil, and is arranged in approximately three lines. The leaf has three circular holes along its length and a small white mark at the top right corner.

Handwritten text on a second palm-leaf strip, oriented vertically. The text is written in a cursive script, likely Tamil, and is arranged in approximately three lines. The leaf has three circular holes along its length.

60
...
...
...
...
...

...
...
...
...
...

Handwritten text on a palm-leaf manuscript strip, featuring Burmese script and two circular holes for binding.

Handwritten text on a second palm-leaf manuscript strip, also featuring Burmese script and two circular holes for binding.

Handwritten text on a palm leaf fragment, likely in an ancient script. The text is arranged in several lines across the length of the leaf. There are two circular holes visible, which were traditionally used for threading a cord to bind multiple leaves together into a book format.

Handwritten text on a second palm leaf fragment, similar to the one above. It also contains several lines of text in an ancient script and features two circular holes for binding.

Handwritten text on a palm-leaf strip, likely in Burmese script. The text is arranged in approximately three lines. The first line begins with a character that resembles '၂၃'. The strip has three circular holes for binding.

Handwritten text on a second palm-leaf strip, also in Burmese script. The text is arranged in approximately three lines. The strip has three circular holes for binding.

Handwritten text on a palm-leaf strip, likely in an ancient script. The text is arranged in three lines and includes several circular symbols (possibly decorative or functional markers) interspersed within the lines.

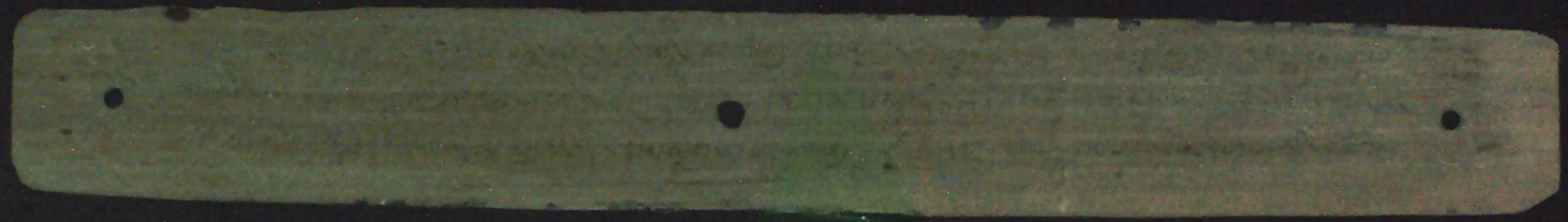
Handwritten text on a second palm-leaf strip, continuing the script. It also features three lines of text with circular symbols interspersed.

Handwritten text on a palm-leaf manuscript strip, featuring three circular holes for binding. The script is an ancient Southeast Asian form, likely Khmer or Thai, and is oriented horizontally.

Handwritten text on a second palm-leaf manuscript strip, also featuring three circular holes for binding. The script is consistent with the first strip and is oriented horizontally.

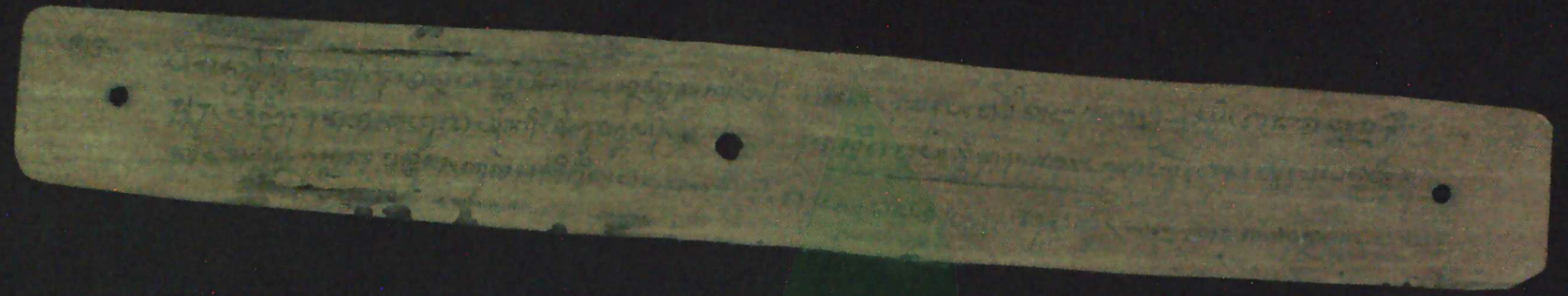
Handwritten text on a palm-leaf manuscript strip, featuring three circular holes for binding. The script is an ancient form, likely Tamil or Grantha, and is arranged in approximately three horizontal lines. The leaf shows signs of age and wear.

A second palm-leaf manuscript strip, positioned below the first. It also features three circular holes for binding. The text is mostly illegible due to fading and the dark background, but some faint characters are visible.

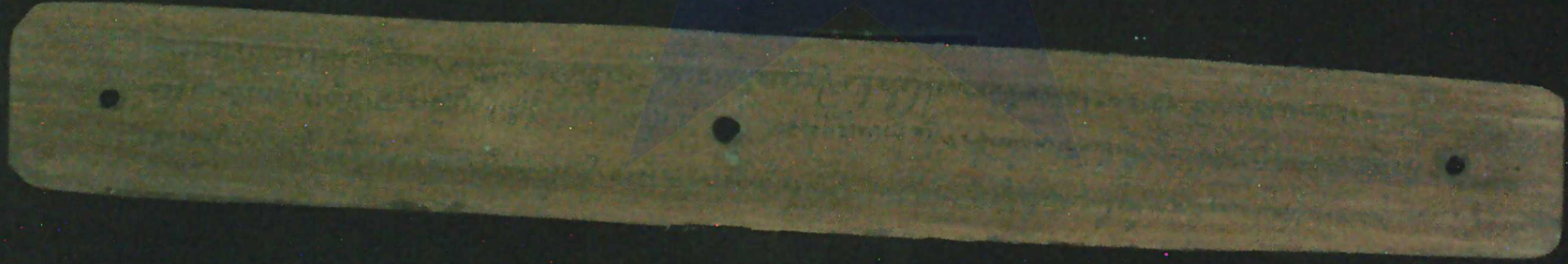




52



52



55



50



52



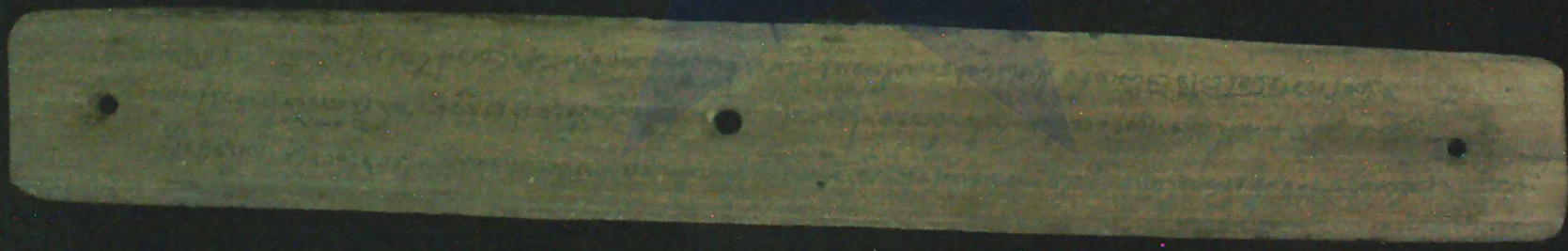
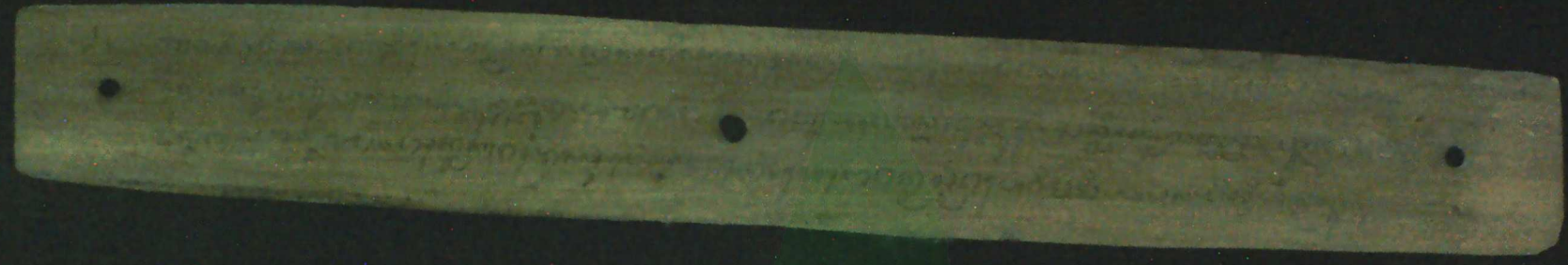
52



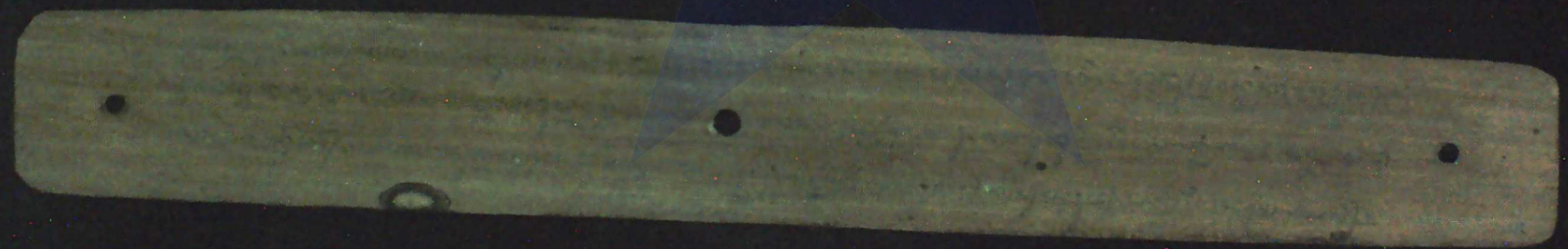
55

Handwritten text on a palm leaf strip, including a circular stamp and three small holes.

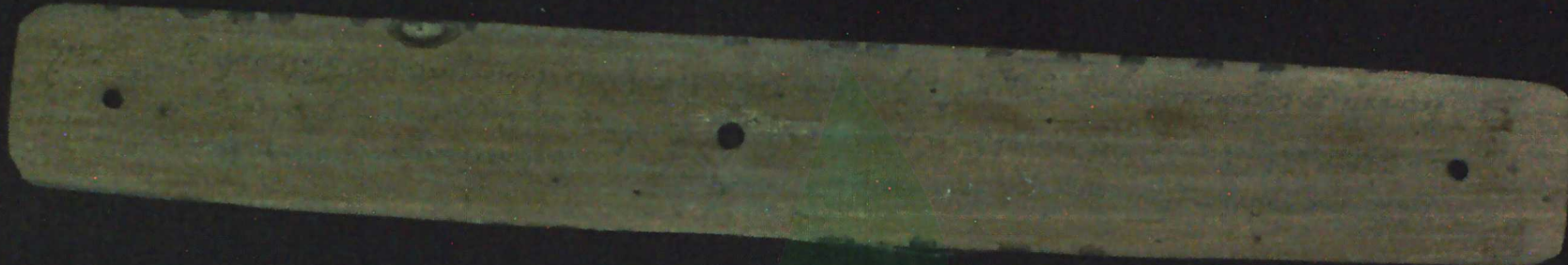
Handwritten text on a palm leaf strip, including three small holes.



52



52



၂၅၁
မူလကုမ္ပဏီလီမိတက်သည် အောက်ဖော်ပြပါ အချက်များကို အကျဉ်းချုပ်ဖော်ပြပါသည်။
• မူလကုမ္ပဏီလီမိတက်သည် အောက်ဖော်ပြပါ အချက်များကို အကျဉ်းချုပ်ဖော်ပြပါသည်။
• မူလကုမ္ပဏီလီမိတက်သည် အောက်ဖော်ပြပါ အချက်များကို အကျဉ်းချုပ်ဖော်ပြပါသည်။

မူလကုမ္ပဏီလီမိတက်သည် အောက်ဖော်ပြပါ အချက်များကို အကျဉ်းချုပ်ဖော်ပြပါသည်။
• မူလကုမ္ပဏီလီမိတက်သည် အောက်ဖော်ပြပါ အချက်များကို အကျဉ်းချုပ်ဖော်ပြပါသည်။
• မူလကုမ္ပဏီလီမိတက်သည် အောက်ဖော်ပြပါ အချက်များကို အကျဉ်းချုပ်ဖော်ပြပါသည်။

Handwritten text on a palm leaf strip, likely a calendar or record. The text is written in a cursive script and includes several lines of information, possibly dates and events. There are three circular holes along the length of the strip.

Handwritten text on a palm leaf strip, continuing the record. The text is written in a cursive script and includes several lines of information. There are three circular holes along the length of the strip.

Handwritten text on a palm-leaf manuscript strip, oriented vertically. The script is an ancient Southeast Asian script, likely Khmer. The text is arranged in approximately three lines, with several circular holes visible along the length of the strip, used for binding multiple leaves together.

Handwritten text on a second palm-leaf manuscript strip, also oriented vertically. The script is consistent with the first strip. It features several circular holes and is written in a cursive style characteristic of Khmer inscriptions.

Handwritten text on a palm-leaf strip, likely in an ancient script. The text is arranged in three lines and is punctuated by three circular holes. The script is finely etched into the surface of the leaf.

Handwritten text on a second palm-leaf strip, also in an ancient script. This strip features four circular holes and is similarly inscribed with text in three lines.

Handwritten text on a palm-leaf manuscript strip, likely in Burmese script. The text is arranged in three lines and includes several circular holes for binding.

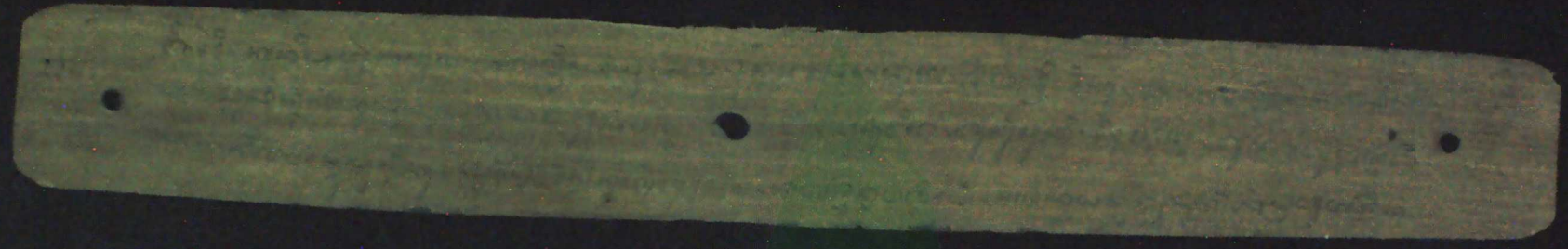
Handwritten text on a second palm-leaf manuscript strip, continuing the Burmese script. It also features circular holes for binding.

Handwritten text on a palm-leaf manuscript strip, likely in Burmese script. The text is arranged in three lines and includes several circular holes for binding.

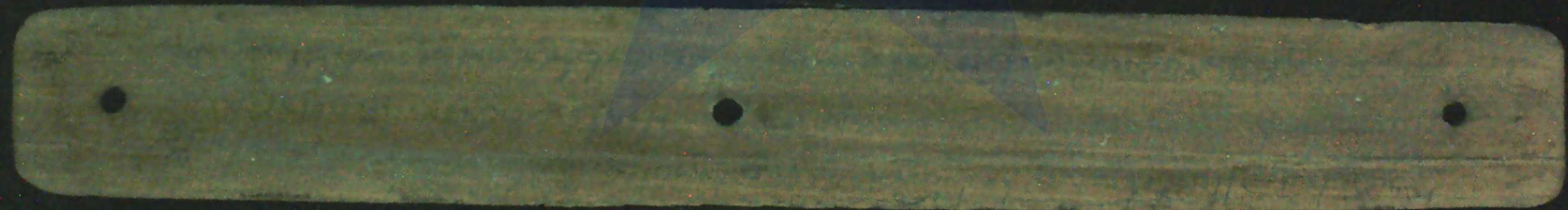
Handwritten text on a second palm-leaf manuscript strip, continuing the script. It also features circular holes and a small pink thread at the right end.

Handwritten text in Burmese script on a palm leaf. The text is arranged in three lines and includes several characters that appear to be numbers or specific symbols. A small pink thread is visible on the right side of the leaf.

Handwritten text in Burmese script on a palm leaf. The text is arranged in three lines and is significantly faded compared to the top leaf. Three circular holes are visible along the length of the leaf.



50



52



FF



55



Handwritten text in a script, likely Burmese, inscribed on a wooden strip. The text is arranged in three lines and includes three circular holes. The script is finely etched into the surface of the wood.

Handwritten text on a palm-leaf manuscript strip, likely in Burmese script. The text is arranged in three lines and includes several circular holes for binding.

Handwritten text on a second palm-leaf manuscript strip, continuing the script from the first strip. It also features circular holes for binding.

Handwritten text on a palm leaf, likely a list or record. The text is written in a cursive script and includes several entries separated by dots. The entries appear to be names or titles, possibly related to a historical or administrative context. The text is written in a dark ink on a light-colored, slightly aged leaf.

Handwritten text on a palm leaf, similar to the one above. It contains several lines of text, with entries separated by dots. The script is consistent with the one on the top leaf, suggesting they are part of the same document or collection. The text is written in a dark ink on a light-colored, slightly aged leaf.

Handwritten Burmese script on a palm-leaf slip, featuring three circular holes for binding. The text is arranged in three horizontal lines across the length of the leaf.

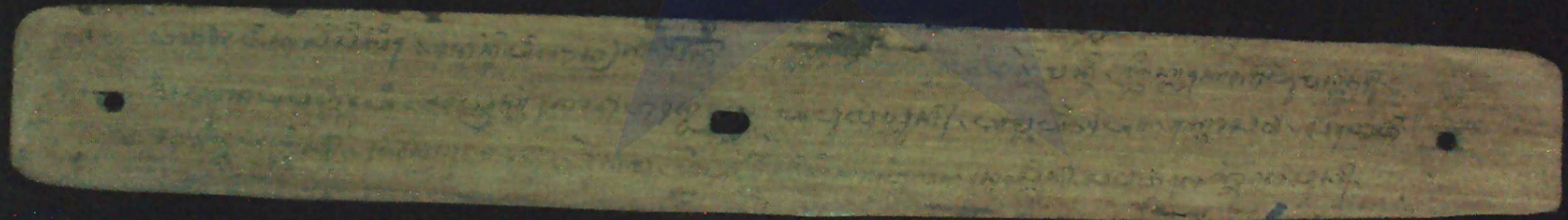
Handwritten Burmese script on a palm-leaf slip, featuring three circular holes for binding. A small pink thread is visible at the right end of the leaf. The text is arranged in three horizontal lines across the length of the leaf.

Handwritten text on a palm leaf strip, oriented vertically. The text is written in a cursive script, likely Tamil. A small pink thread is tied to the right edge of the strip.

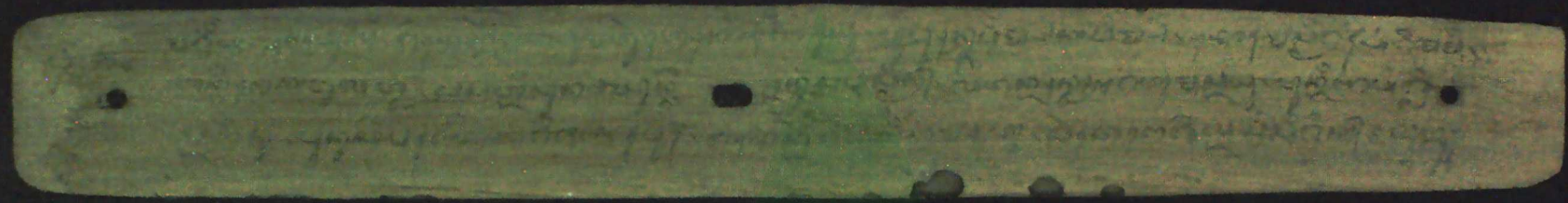
Handwritten text on a palm leaf strip, oriented vertically. The text is written in a cursive script, likely Tamil. There are three small holes along the length of the strip.

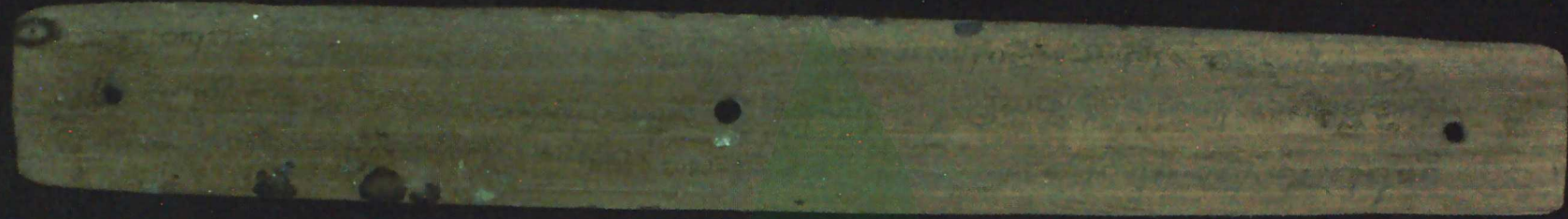
Handwritten text on a palm leaf strip, likely in an ancient script. The text is arranged in several lines and is partially obscured by three circular holes. The script appears to be a form of South Asian or Southeast Asian writing, possibly Tamil or Grantha.

Handwritten text on a palm leaf strip, likely in an ancient script. The text is arranged in several lines and is partially obscured by three circular holes. The script appears to be a form of South Asian or Southeast Asian writing, possibly Tamil or Grantha.



50





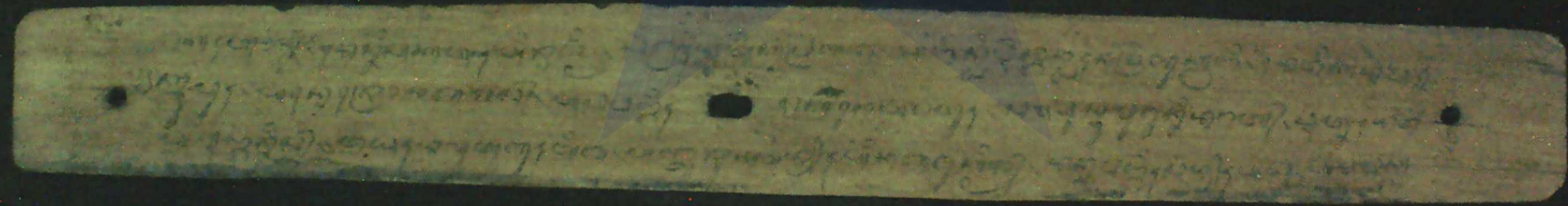
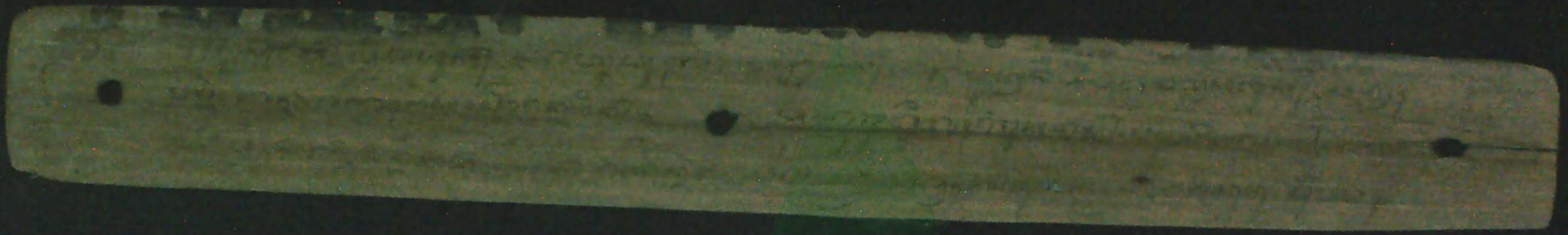
Handwritten text on a palm-leaf manuscript strip, oriented vertically. The text is written in a cursive script, likely Tamil, and is arranged in approximately three lines. A small rectangular notch is visible near the center of the strip.

Handwritten text on a second palm-leaf manuscript strip, oriented vertically. The text is written in a cursive script, likely Tamil, and is arranged in approximately three lines. Three circular holes are visible along the length of the strip.

Handwritten text on a palm-leaf strip, oriented vertically. The text is faint and appears to be in an ancient script, possibly Tamil or Grantha. It is arranged in approximately 15 lines. Three circular holes are visible along the length of the strip, used for binding multiple leaves together.

Handwritten text on a second palm-leaf strip, oriented vertically. The text is faint and appears to be in an ancient script, possibly Tamil or Grantha. It is arranged in approximately 15 lines. Three circular holes are visible along the length of the strip, used for binding multiple leaves together.

52



Handwritten text on a palm-leaf strip, oriented vertically. The text is written in a cursive script and is partially obscured by three circular holes. The leaf shows signs of age and discoloration.

Handwritten text on a palm-leaf strip, oriented vertically. The text is written in a cursive script and is partially obscured by three circular holes. The leaf shows signs of age and discoloration.

Handwritten text on a palm-leaf strip, oriented vertically. The text is written in a cursive script and includes several lines of characters. There are three circular holes punched along the length of the strip.

Handwritten text on a palm-leaf strip, oriented vertically. The text is written in a cursive script and includes several lines of characters. There are three circular holes punched along the length of the strip.

Handwritten text on a palm leaf strip, likely a calendar or record. The text is in a script that appears to be Burmese or Thai. It includes several lines of text, possibly representing dates or events. There are three circular holes visible along the length of the strip.

Handwritten text on a second palm leaf strip, continuing the record or calendar. The script is consistent with the first strip. It also features three circular holes. The text is arranged in several lines across the length of the strip.

Handwritten text on a palm leaf fragment, likely in an ancient script. The text is arranged in a single line and includes several circular symbols (possibly decorative or functional markers) interspersed with the characters. The script is finely etched into the surface of the leaf.

Handwritten text on a second palm leaf fragment, continuing the script from the first fragment. It also features circular symbols interspersed with the characters. The text is written in a consistent style on the natural texture of the leaf.

Handwritten text on a palm leaf strip, featuring three circular holes for binding. The script is an ancient form, likely Tamil or Grantha, and is oriented horizontally.

Handwritten text on a second palm leaf strip, also featuring three circular holes for binding. The script is consistent with the first strip and is oriented horizontally.

Handwritten text on a palm leaf strip, likely a form of Burmese script. The text is arranged in approximately three lines. There are three circular holes along the length of the strip, which were traditionally used for threading a cord to bind multiple leaves together into a book format.

Handwritten text on a second palm leaf strip, continuing the script. Like the first strip, it features three circular holes for binding. The text is written in a cursive style characteristic of traditional Burmese manuscripts.

Handwritten text on a palm leaf strip, likely a calendar or record. The text is written in a cursive script and includes several lines of information, possibly dates and events. There are three circular holes along the length of the strip.

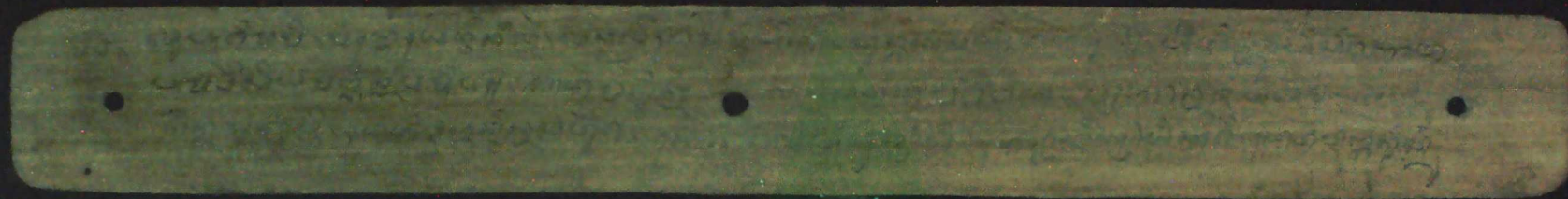
Handwritten text on a palm leaf strip, similar to the one above. The text is written in a cursive script and includes several lines of information. There are three circular holes along the length of the strip, and a small pink thread is visible at the right end.

Handwritten text on a palm leaf strip, oriented vertically. The text is in an ancient script, likely Tamil, and is arranged in approximately 12 lines. A small notch is visible on the right edge of the strip.

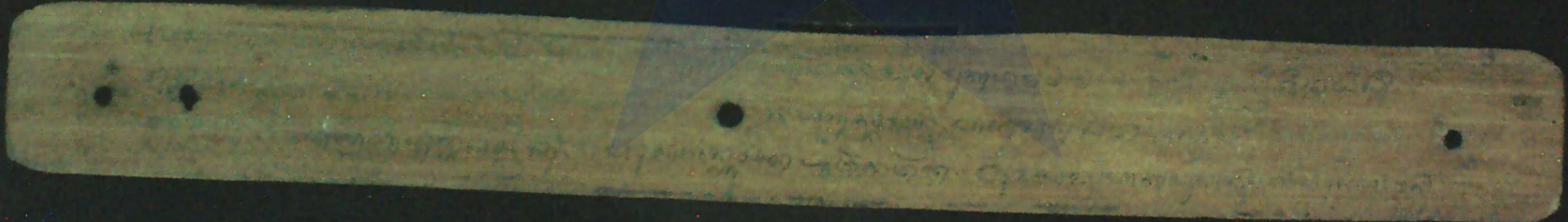
Handwritten text on a palm leaf strip, oriented vertically. The text is in an ancient script, likely Tamil, and is arranged in approximately 12 lines. Three circular holes are visible along the length of the strip.

Handwritten text on a palm-leaf strip, oriented vertically. The text is written in a cursive script, likely Tamil, and is arranged in approximately four lines. Three circular holes are visible along the length of the strip, which were used for threading a cord to bind multiple leaves together into a book format.

Handwritten text on a second palm-leaf strip, oriented vertically. The text is written in the same cursive script as the first strip and is arranged in approximately four lines. Three circular holes are also visible along the length of this strip.



55





55



50

Handwritten text on a palm-leaf manuscript strip, featuring several lines of script and two circular holes for binding.

Handwritten text on a palm-leaf manuscript strip, featuring several lines of script and two circular holes for binding.

Handwritten text on a palm leaf strip, likely in an ancient script. The text is arranged in several lines and includes three circular holes for binding. The script appears to be a form of South Asian or Southeast Asian writing, possibly from a historical record or legal document.

Handwritten text on a second palm leaf strip, similar to the first. It also features three circular holes and contains text in the same script. The leaf shows signs of age and wear.

Handwritten Burmese script on a palm-leaf slip, featuring three circular holes for binding. The text is arranged in three lines across the length of the leaf.

Handwritten Burmese script on a palm-leaf slip, featuring three circular holes for binding. The text is arranged in three lines across the length of the leaf.

Handwritten text on a palm-leaf manuscript strip, likely in Burmese script. The text is arranged in approximately three lines. The first line contains several characters, including what appears to be a numeral '၁၀၀' (100) at the beginning. The second and third lines continue the text with various characters and symbols. There are three distinct circular holes punched along the length of the strip, which were used for threading a cord to bind multiple leaves together into a book format.

Handwritten text on a second palm-leaf manuscript strip, also in Burmese script. The text is arranged in approximately two lines. The first line contains several characters, and the second line continues the text. There are three distinct circular holes punched along the length of the strip, consistent with the strip above, used for binding.

Handwritten text on a palm leaf strip, likely in an ancient script. The text is arranged in three lines and is partially obscured by three circular holes. The script appears to be a form of South Asian or Southeast Asian writing, possibly from the Khmer or Mon regions.

Handwritten text on a palm leaf strip, likely in an ancient script. The text is arranged in three lines and is partially obscured by three circular holes. The script appears to be a form of South Asian or Southeast Asian writing, possibly from the Khmer or Mon regions.

Handwritten Burmese script on a palm leaf, likely containing a list or record. The text is arranged in several lines, with some characters appearing to be numbers or specific identifiers. The script is finely etched into the surface of the leaf.

Handwritten Burmese script on a palm leaf, continuing the list or record. The text is arranged in several lines, with some characters appearing to be numbers or specific identifiers. The script is finely etched into the surface of the leaf.

Handwritten text on a palm leaf fragment, likely a portion of a larger inscription. The text is written in a cursive script and includes several lines of characters, some of which are punctuated by small circular marks.

Handwritten text on a palm leaf fragment, similar to the one above. It contains several lines of cursive script with circular punctuations, possibly representing a list or a specific set of instructions.

Handwritten text on a palm-leaf strip, likely in an ancient script. The text is arranged in several lines and is partially obscured by a blue and green repair patch in the center. The script appears to be an early form of a South Asian script, possibly Grantha or Tamil.

A second palm-leaf strip, mostly blank, with a few small dark spots and a blue and green repair patch in the center. It is positioned below the first strip.

Handwritten text on a palm leaf strip, likely in Burmese script. The text is arranged in approximately three lines. There are three circular holes along the length of the strip, which were used for threading a cord to bind multiple leaves together into a book format. The script is finely etched into the surface of the dried leaf.

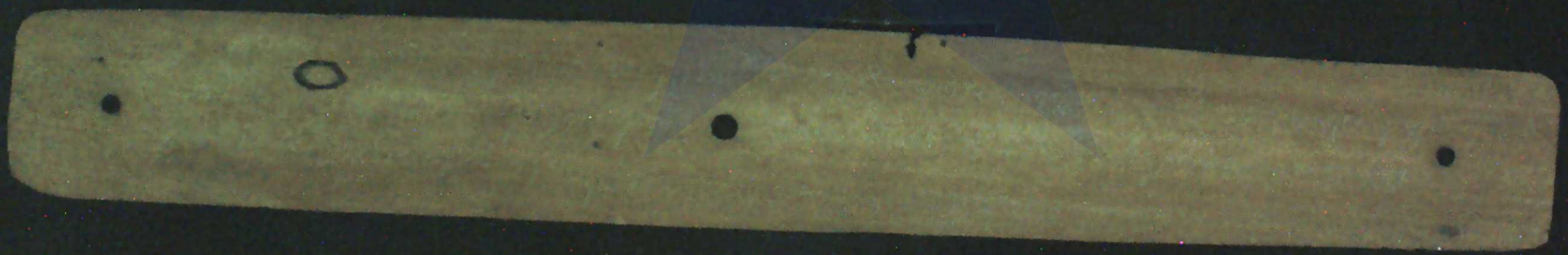
Handwritten text on a second palm leaf strip, also in Burmese script. This strip features three circular holes, similar to the one above, indicating it was part of a bound volume. The text is written in a consistent style across the length of the leaf.

Handwritten text on a palm-leaf manuscript strip, oriented vertically. The text is written in a cursive script and is partially obscured by three circular holes. The leaf shows signs of age and wear.

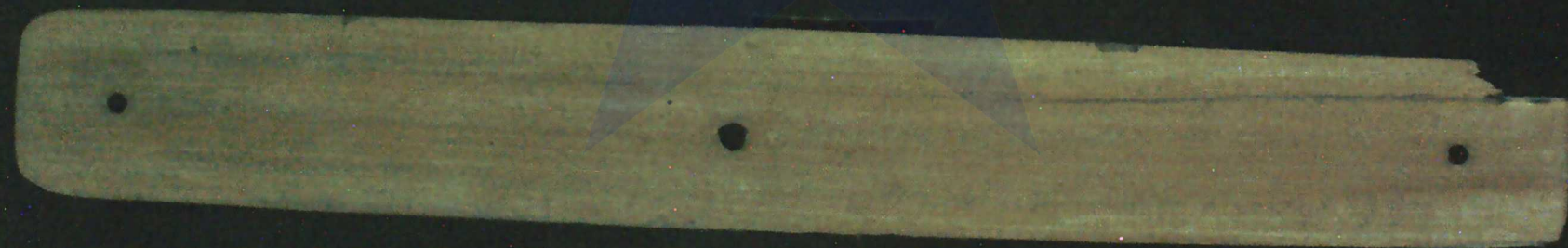
Handwritten text on a second palm-leaf manuscript strip, oriented vertically. The text is written in a cursive script and is partially obscured by three circular holes. The leaf shows signs of age and wear.

Handwritten Burmese script on a palm-leaf slip, featuring three circular holes for binding. The text is arranged in three lines and appears to be a historical record or administrative document.

A second palm-leaf slip, mostly blank, with three circular holes for binding, positioned below the first slip.



50



55

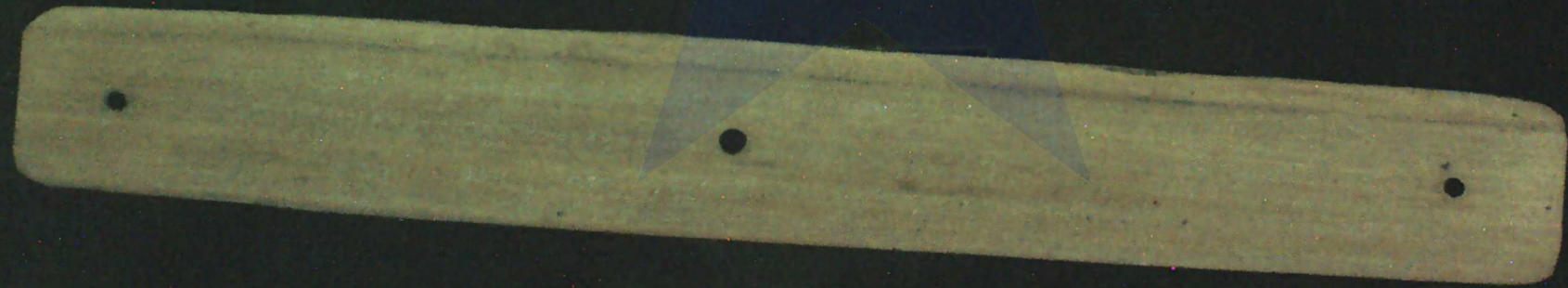




55



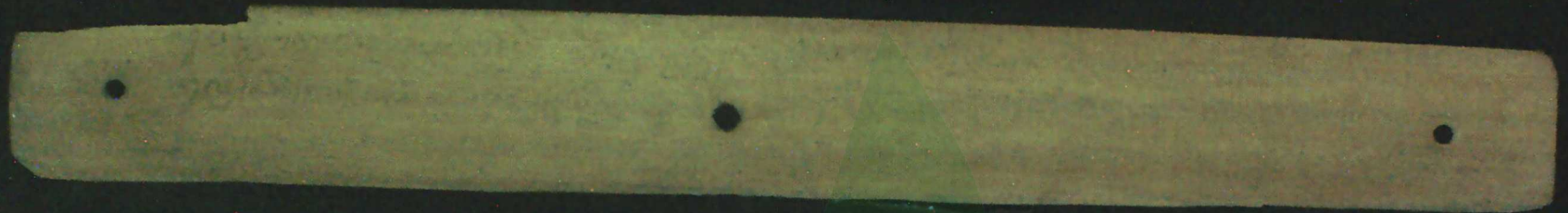
52



50



ff





PERPUSTAKAAN NASIONAL RI

